



GEAR PUMP 1.1/2" AMB 1.1/2X100B

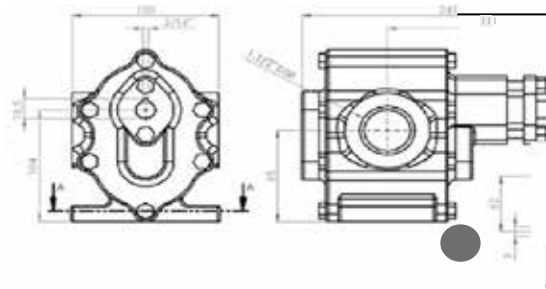
*Amboretto
Corporation*

GEAR PUMP 1.1/2"

AMB1.1/2X100B



Dimensional Drawing



CAPACITY

- Maximum Flow: 12,200 liters/hour
- Maximum Pressure: 22-bar
- Maximum Rotation: 1750-RPM
- Viscosity: From 0,5 up to 200,000 cSt
- Maximum Temperature: Up to 350°C

CHARACTERISTICS

- Threaded suction and retaining nozzles Ø 1.1/2" BSP;
- Gears helical teeth or spurs;
- Gasket or mechanical seal;
- Sliding bearings in self-lubricating bushings;
- Construction in cast iron, stainless steel, carbon steel or special materials for applications according to customer specification.

APPLICATIONS

- Pumping and transfer of fluids in general;
- Lubrication systems;
- Filtration systems;
- Supply units;
- Fluid circulation and recirculation systems;
- Loading and unloading of tank trucks;
- Feeding systems for lines, machinery and equipment;
- Dosing in industrial processes;
- Drainage of fluids;
- Systems of refrigeration of machinery and equipment;
- Hydraulics machinery and equipment in general;

OPTIONAL

- Construction in special materials for specific applications Coupling; Motor-Pump Set

FLOW TABLE

| RPM, FLOW AND POWER | | | BOOSTER PRESSURE (KG/CM ²) | | | | | | | | | | | |
|---------------------|------|---------------|--|-------|-------|-------|-------|-------|--------|-------|-------|-------|-------|-------|
| | | | 0 | 2 | 4 | 6 | 8 | 10 | 12 | 14 | 16 | 18 | 20 | 22 |
| 1750 RPM | FLOW | liters/hour | 12200 | 12192 | 2181 | 12174 | 12163 | 12156 | 12141 | 12135 | | | | |
| | | liters/minute | 203.3 | 203.2 | 203.0 | 202.9 | 202.7 | 202.6 | 202.4 | 202.3 | | | | |
| | | HP | 3.00 | 3.00 | 3.00 | 3.00 | 4.00 | 4.00 | 5.00 | 5.00 | | | | |
| 1150 RPM | FLOW | liters/hour | 8000 | 7996 | 7983 | 7976 | 7964 | 7957 | 7945 | 7931 | 7924 | 7918 | 7902 | 7896 |
| | | liters/minute | 133.3 | 133.3 | 133.1 | 132.9 | 132.7 | 132.6 | 1132.4 | 132.2 | 132.1 | 132.0 | 131.7 | 131.6 |
| | | HP | 3.00 | 3.00 | 3.00 | 3.00 | 4.00 | 4.00 | 5.00 | 5.00 | 7.50 | 10.00 | 10.00 | 10.00 |
| 850 RPM | FLOW | liters/hour | 6000 | 5993 | 5982 | 5971 | 5964 | 5955 | 5942 | 5937 | 5923 | 5916 | 5902 | 5894 |
| | | liters/minute | 100.0 | 99.9 | 99.7 | 99.5 | 99.4 | 99.3 | 99.0 | 99.0 | 98.7 | 98.6 | 98.4 | 98.2 |
| | | HP | 3.00 | 3.00 | 3.00 | 3.00 | 4.00 | 4.00 | 5.00 | 5.00 | 7.50 | 10.00 | 10.00 | 10.00 |



www.amborettoamericas.com

Amboretto
Corporation