



GEAR PUMP 3"

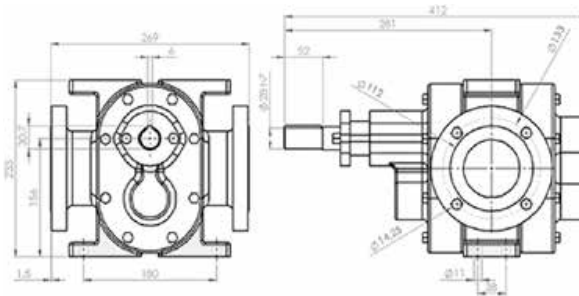
AMB 3X132

*Amboretto
Corporation*

GEAR PUMP 3" AMB 3X132



Dimensional Drawing



CAPACITY

- Maximum Flow: 30,000 liters/hour
- Maximum Pressure: 15-bar
- Maximum Rotation: 1150-RPM
- Viscosity: From 0,5 up to 200,000 cSt
- Maximum Temperature: Up to 350°C

CHARACTERISTICS

- Flanged suction and retaining nozzles Ø 3"
- Gears helical teeth or spurs;
- Option of pumps in Poliacetal® or bronze for fuel pumping
- Gasket or mechanical seal;
- Sliding bearings in self-lubricating bushings;
- Construction in cast iron, stainless steel, carbon steel or special materials for applications according to customer specification.

APPLICATIONS

- Loading and unloading of tank trucks coupled to the power take-off. Proper for fuel, oils and asphalt carriers;
- Pumping and transfer of fluids in general;
- Lubrication systems;
- Filtration systems;
- Supply units;
- Fluid circulation and recirculation systems;
- Feeding systems for lines, machinery and equipment;
- Dosing in industrial processes;
- Drainage of fluids;
- Systems of refrigeration of machinery and equipment;
- Hydraulics machinery and equipment in general;

OPTIONAL

- Bearing housings; Coupling;
- Motor-Pump Set.

FLOW TABLE

RPM, FLOW AND POWER		BOOSTER PRESSURE (KG/CM ²)												
		0	2	4	6	8	10	12	14	16	18	20	22	
1150 RPM	FLOW	liters/hour	30200	20194	30187	30178	30162	30155						
		liters/minute	503.3	336.6	503.1	503.0	502.7	502.6						
		HP	10.00	10.00	12.50	12.50	15.00	15.00						
850 RPM	FLOW	liters/hour	23200	22194	22182	22175	22163	22155	22143					
		liters/minute	386.7	369.9	369.7	369.6	369.4	369.3	369.1					
		HP	10.00	10.00	12.50	12.50	15.00	15.00	20.00					



www.amborettoamericas.com

*Amboretto
Corporation*