



GEAR PUMP 1.1/2"

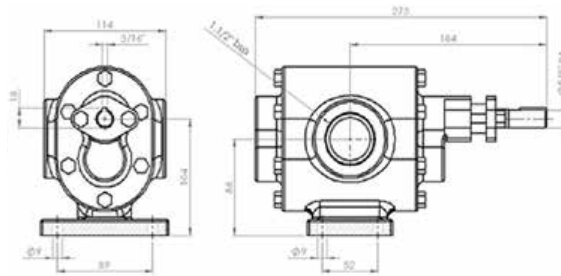
AMB1.1/2 X100

*Amboretto
Corporation*

GEAR PUMP 1.1/2" AMB1.1/2 X100



Dimensional Drawing



CAPACITY

- Maximum Flow: 9,200 liters/hour
- Maximum Pressure: 22-bar
- Maximum Rotation: 1750-RPM
- Viscosity: From 0,5 up to 200,000 cSt
- Maximum Temperature: Up to 350°C

CHARACTERISTICS

- Threaded suction and retaining nozzles \varnothing 1.1/2" BSP;
- Gears helical teeth or spurs;
- Gasket or mechanical seal;
- Sliding bearings in self-lubricating bushings;
- Construction in cast iron, stainless steel, carbon steel or special materials for applications according to customer specification.

APPLICATIONS

- Pumping and transfer of fluids in general;
- Lubrication systems;
- Filtration systems;
- Supply units;
- Fluid circulation and recirculation systems;
- Loading and unloading of tank trucks;
- Feeding systems for lines, machinery and equipment;
- Dosing in industrial processes;
- Drainage of fluids;
- Systems of refrigeration of machinery and equipment;
- Hydraulics machinery and equipment in general;

OPTIONAL

- Integrated relief valve; Bearing housings;
 - Construction in special materials for specific applications
- Coupling; Motor-Pump Set;

FLOW TABLE

RPM, FLOW AND POWER		BOOSTER PRESSURE (KG/CM ²)												
		0	2	4	6	8	10	12	14	16	18	20	22	
1750 RPM	FLOW	liters/hour	9200	9193	9184	9172	9160	9152	9147	9133				
		liters/minute	153.3	153.2	153.1	152.9	152.7	152.5	152.5	152.2				
		HP	3.00	3.00	3.00	3.00	4.00	4.00	5.00	5.00				
1150 RPM	FLOW	liters/hour	6000	5993	5982	5971	5964	5955	5942	5937	5923	5916	5902	5894
		liters/minute	100.0	99.9	99.7	99.5	99.4	99.3	99.0	99.0	98.7	98.6	98.4	98.2
		HP	3.00	3.00	3.00	3.00	4.00	4.00	5.00	5.00	7.50	10.00	10.00	10.00
850 RPM	FLOW	liters/hour	4600	4595	4588	4573	4565	4551	4545	4539	4524	4517	4504	4497
		liters/minute	76.67	76.58	76.47	76.22	76.08	75.85	75.75	75.65	75.40	75.28	75.07	74.95
		HP	3.00	3.00	3.00	3.00	4.00	4.00	5.00	5.00	7.50	10.00	10.00	10.00

